

SC Works Standards Documentation—Midlands

Center Photo index

SC Works Center Columbia – Exterior

1. SC Works signage
2. SC Works signage
3. SC Works signage
4. SC Works Center parking overview
5. Center location (public transit stop-Gadsden Street)
6. Accessible parking
7. Entrance walkway
8. Entrance
9. Entrance and signage
10. Entrance and signage detail
11. Hours
12. Center signage (COVID-19)

SC Works Center (Lexington) – Exterior

1. SC Works signage marquee
2. SC Works signage entrance
3. Center parking overview
4. SC Works Center parking
5. Accessible parking
6. Entrance/hours

SC Works Center (Fairfield) – Exterior

1. SC Works signage marquee
2. SC Works Center
3. Center parking overview
4. SC Works Center accessible parking
5. Accessible approach
6. Entrance/hours/information

SC Works Standards Documentation—Midlands

SC Works Center (Columbia) - Exterior



1



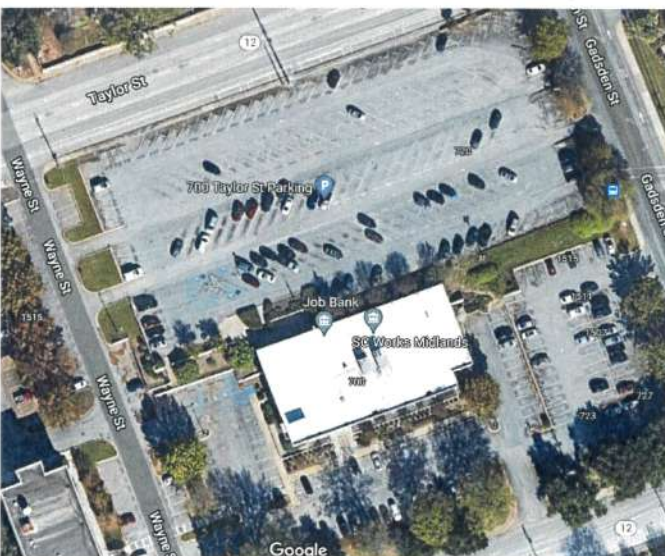
2



3



4



5



6

SC Works Standards Documentation—Midlands

SC Work Center (Columbia) - Exterior



7



8



9



10



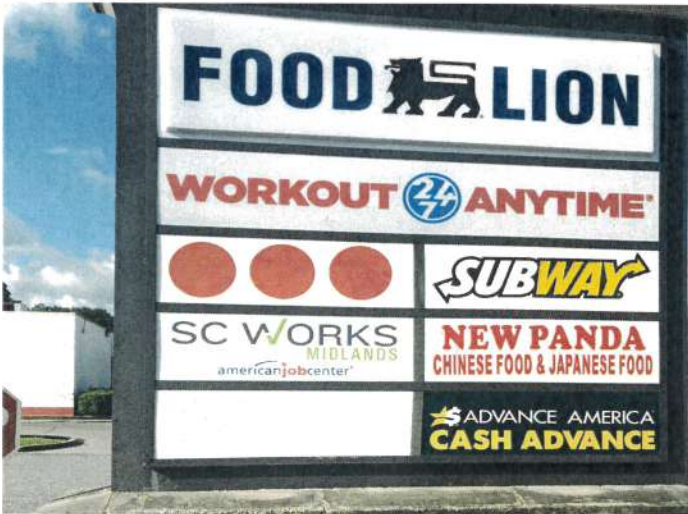
11



12

SC Works Standards Documentation—Midlands

SC Works (Lexington) - Exterior



1



2



3



4



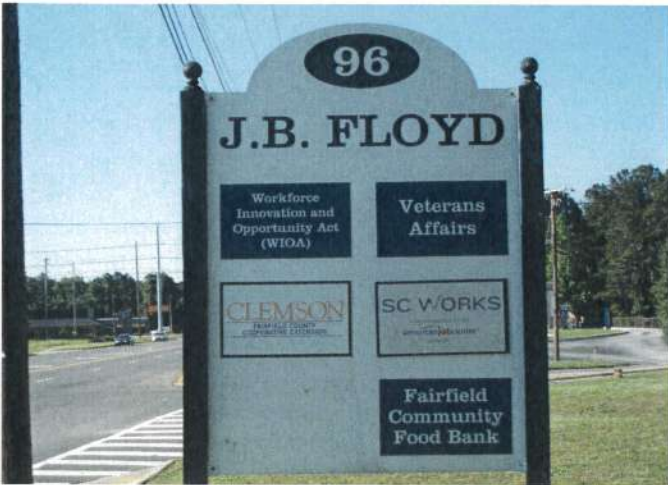
5



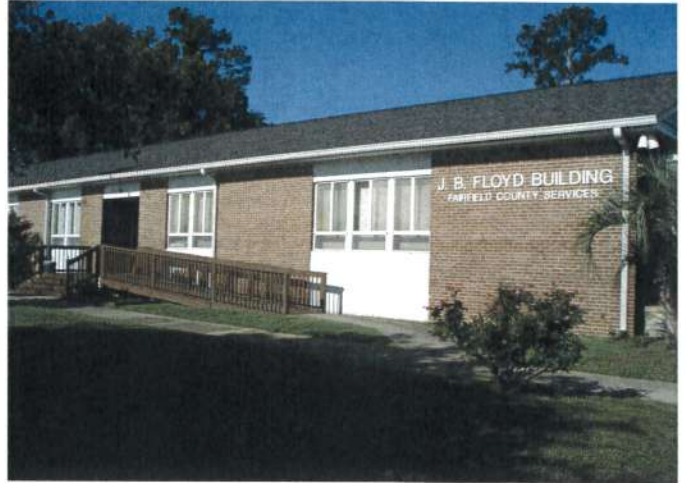
6

SC Works Standards Documentation—Midlands

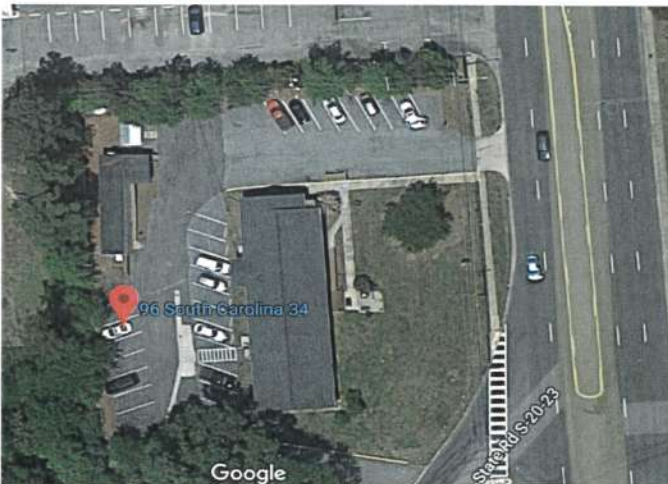
SC Works (Fairfield) - Exterior



1



2



3



4



5



6

SC Works Standards Documentation—Midlands

Center Photo index

SC Work Center (Columbia) - Interior, Lobby

1. Main lobby, seating
2. Main lobby, seating
3. Greeter Kiosk (sign-in)
4. Center & Partner information display
5. Center information display monitor (rotating information)
6. Center information display monitor (rotating information)
7. Public accessible restroom
8. Public accessible restroom
9. Public accessible restroom
10. Public accessible restroom

SC Work Center (Lexington) - Interior, Lobby

1. Main lobby, check-in
2. Main lobby, seating
3. Main lobby, seating & information
4. Main lobby, seating & EO
5. Greeter Kiosk (sign-in)
6. Center information display monitor (rotating information)

SC Work Center (Fairfield) - Interior, Lobby

1. Main lobby, check-in
2. Main lobby, seating
3. Greeter Kiosk (sign-in)
4. Public accessible restroom
5. Public accessible restroom

SC Works Standards Documentation—Midlands

SC Work Center (Columbia) - Interior, Lobby



1



2



3



4



5



6

SC Works Standards Documentation—Midlands

SC Work Center (Columbia) - Interior, Lobby



7



8



9



10

SC Works Standards Documentation—Midlands

SC Works (Lexington) - Interior, Lobby



1



2



3



4



5



6

SC Works Standards Documentation—Midlands

SC Works Center Lexington - Interior, Lobby



7



8



9



10



11



12

SC Works Standards Documentation—Midlands

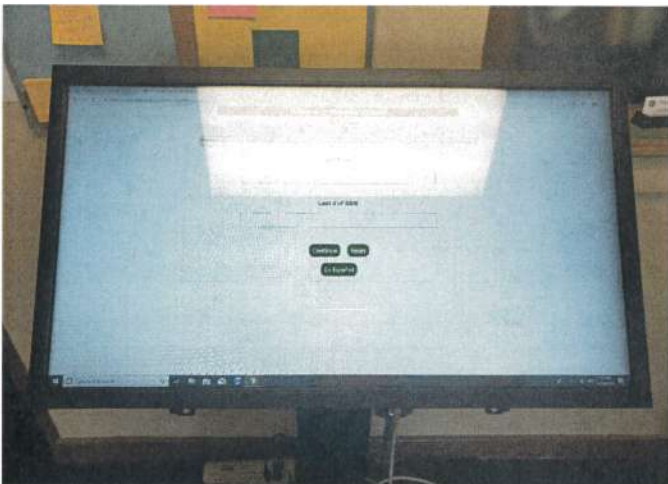
SC Works (Fairfield) - Interior, Lobby



1



2



3



4



5

SC Works Standards Documentation—Midlands

Center Photo index

SC Work Center (Columbia) - Interior, Resource Room

1. Resource Center information sign
2. Resource room overview
3. Workstations & PCs
4. Workstations & PCs
5. Information board
6. Information board 2
7. Accessible adjustable workstation
8. Magnisight Reader magnification device
9. JAWS screen reader software
10. ZoomText magnifier for PC

SC Work Center (Lexington) - Interior, Resource Room

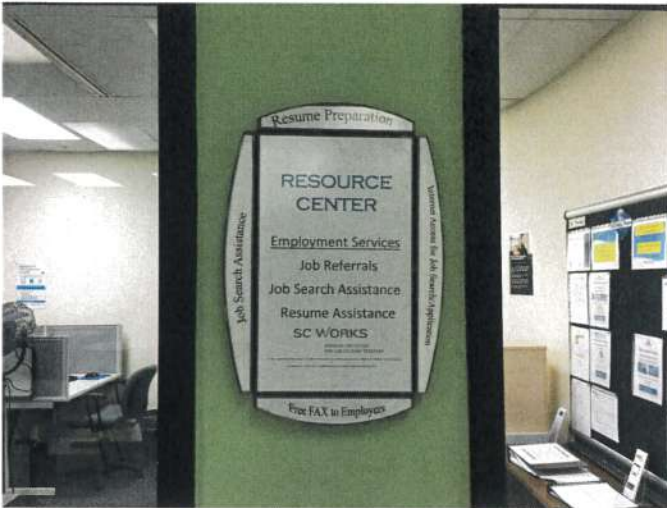
1. Workstations & PCs
2. Workstations & PCs
3. Information board
4. ADA Workstations & PC
5. JAWS screen reader software
6. ZoomText magnifier for PC

SC Work Center (Fairfield) - Interior, Resource Room

1. Workstations & PCs
2. Workstations & PCs, Printer
3. Information board
4. Center Information
5. JAWS screen reader software
6. ZoomText magnifier for PC

SC Works Standards Documentation—Midlands

SC Works (Columbia) - Interior, Resource Room



1



2



3



4

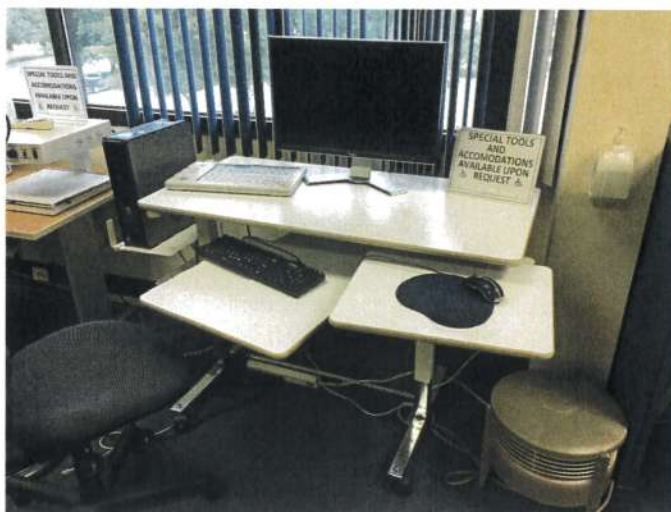


5



6

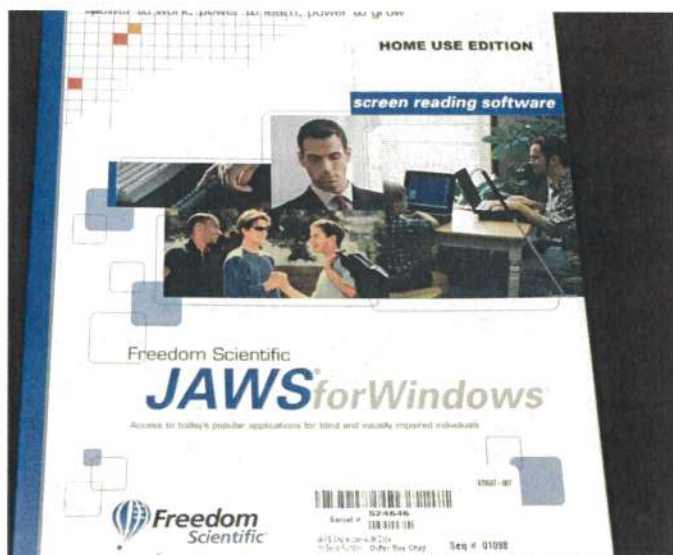
SC Works Standards Documentation—Midlands
SC Works Center (Columbia) - Interior, Resource Room



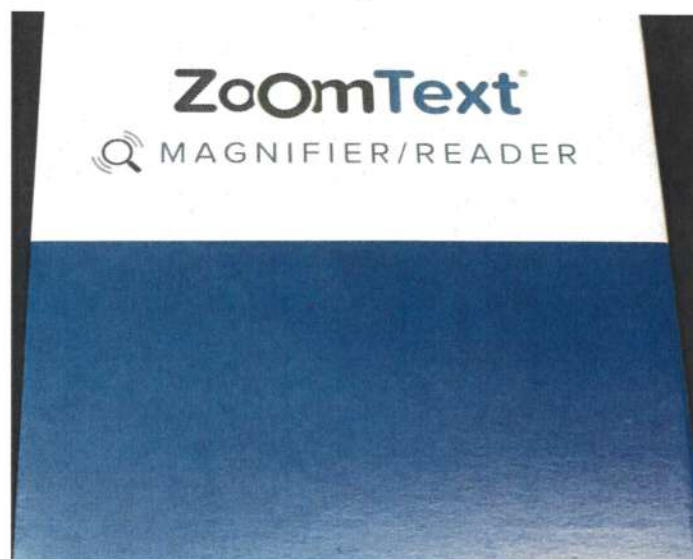
7



8



9



10

SC Works Standards Documentation—Midlands

SC Works (Lexington) - Interior, Resource Room



1



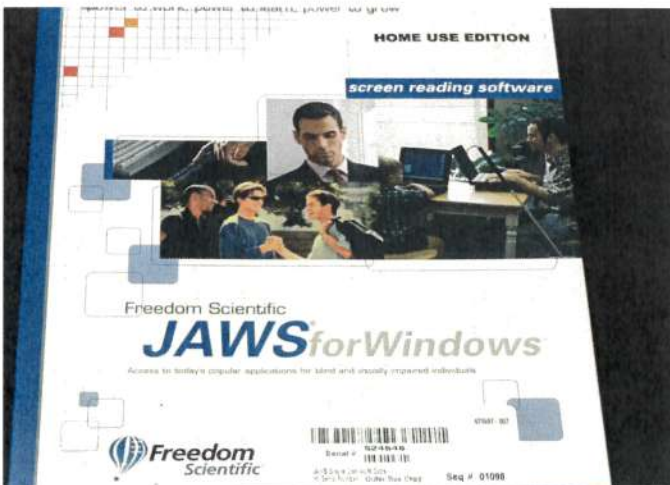
2



3



4



5



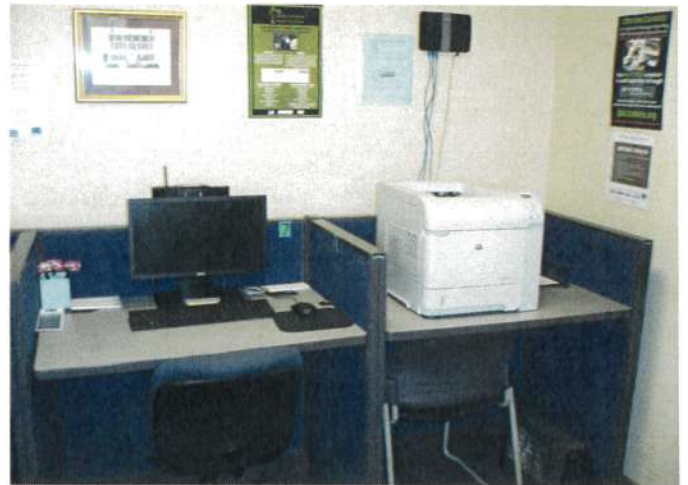
6

SC Works Standards Documentation—Midlands

SC Works (Fairfield) - Interior, Resource Room



1



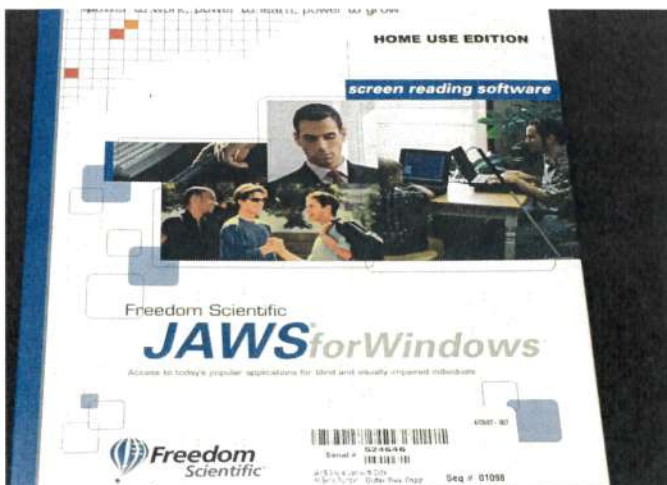
2



3



4



5



6

SC Works Standards Documentation—Midlands

Center Photo index

SC Work Center (Columbia) - Interior, other spaces

1. Flexible space lobby (assessments, interviews, hiring events, private conversation, etc.)
2. Flexible space room
3. Flexible space room 2 (3 PCs)
4. Workshop/Flexible space (smartboard equipped)
5. Workshop/Computer lab/Flexible space (smartboard and 16 PC equipped)
6. Assessment/Workshop/Flexible space (14 PCs)
7. Staff service area
8. Partner area
9. Staff service area
10. Flexible/Partner space (5 cubicles)

SC Work Center (Lexington) - Interior, other spaces

1. Workshop/Computer lab/Flexible space (smartboard and 10 PC equipped)
2. Workshop/Computer lab/Flexible space (smartboard and 12 PC equipped)
3. Conference/Classroom/Flexible space (2 Large Display Monitors equipped)
4. Private office space
5. Flex office space (2 in the center)
6. EO display

SC Work Center (Fairfield) - Interior, other spaces

1. Private office space
2. Center check-in point/information center
3. Workshop/Flexible space (smartboard equipped)

SC Works Standards Documentation—Midlands
SC Work Center (Columbia) - Interior, other spaces



1



2



3



4



5



6

SC Works Standards Documentation—Midlands
SC Work Center (Columbia) - Interior, other spaces



7



8



9



10

SC Works Standards Documentation—Midlands

SC Works (Lexington) - Interior, other spaces



1



2



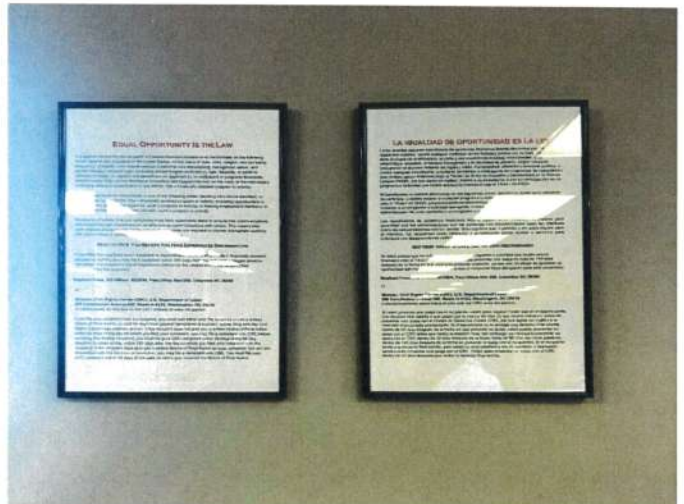
3



4



5



6

SC Works Standards Documentation—Midlands

SC Works (Fairfield) - Interior, other spaces



1



2



3